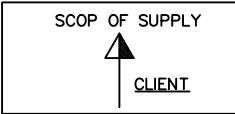
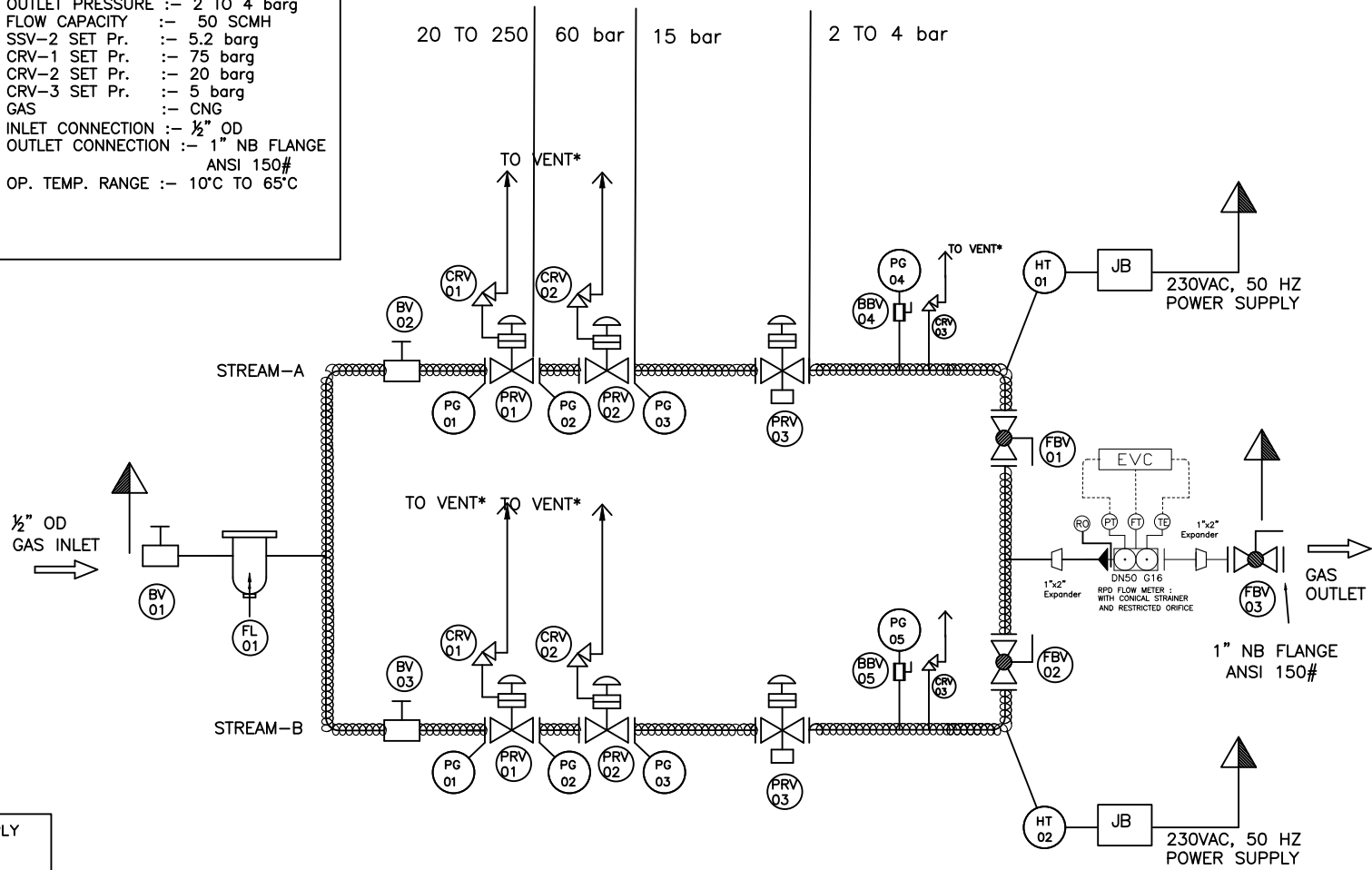


LEGENDS		OPERATING CONDITIONS :-	
(PRV)	PRESSURE REDUCING VALVE	INLET PRESSURE :-	20 TO 250 bar
(PG)	PRESSURE GAUGE	OUTLET PRESSURE :-	2 TO 4 barg
(BBV)	BLOCK & BLEED VALVE	FLOW CAPACITY :-	50 SCMH
(CRV)	CREEP RELIEF VALVE	SSV-2 SET Pr. :-	5.2 barg
(SSV)	SLAM SHUT OFF VALVE	CRV-1 SET Pr. :-	75 barg
(BV)	BALL VALVE	CRV-2 SET Pr. :-	20 barg
(FBV)	FLANGED BALL VALVE	CRV-3 SET Pr. :-	5 barg
(FL)	FILTER	GAS :-	CNG
(HT)	HEAT TRACING CABLE WITH INBUILT THERMOSTAT	INLET CONNECTION :-	1/2" OD
		OUTLET CONNECTION :-	1" NB FLANGE ANSI 150#
		OP. TEMP. RANGE :-	10°C TO 65°C



DCS WILL BE SUPPLIED
DAILY MOUNTED ON PRE-FABRICATED
SKID

NOTE:-

- 1) VENT* :The vent lines shall be terminated at a height of 3 meter from the ground level.

DRN	ARS	06.12.25	TITLE	CLIENT: HPOIL GAS
			TYPICAL P&ID OF 50 SCMH TWIN STREAM CNG DCU WITH RPD FLOW METER & EVC	DRG No.
				REV
				0
			SHEET NO.	SCALE