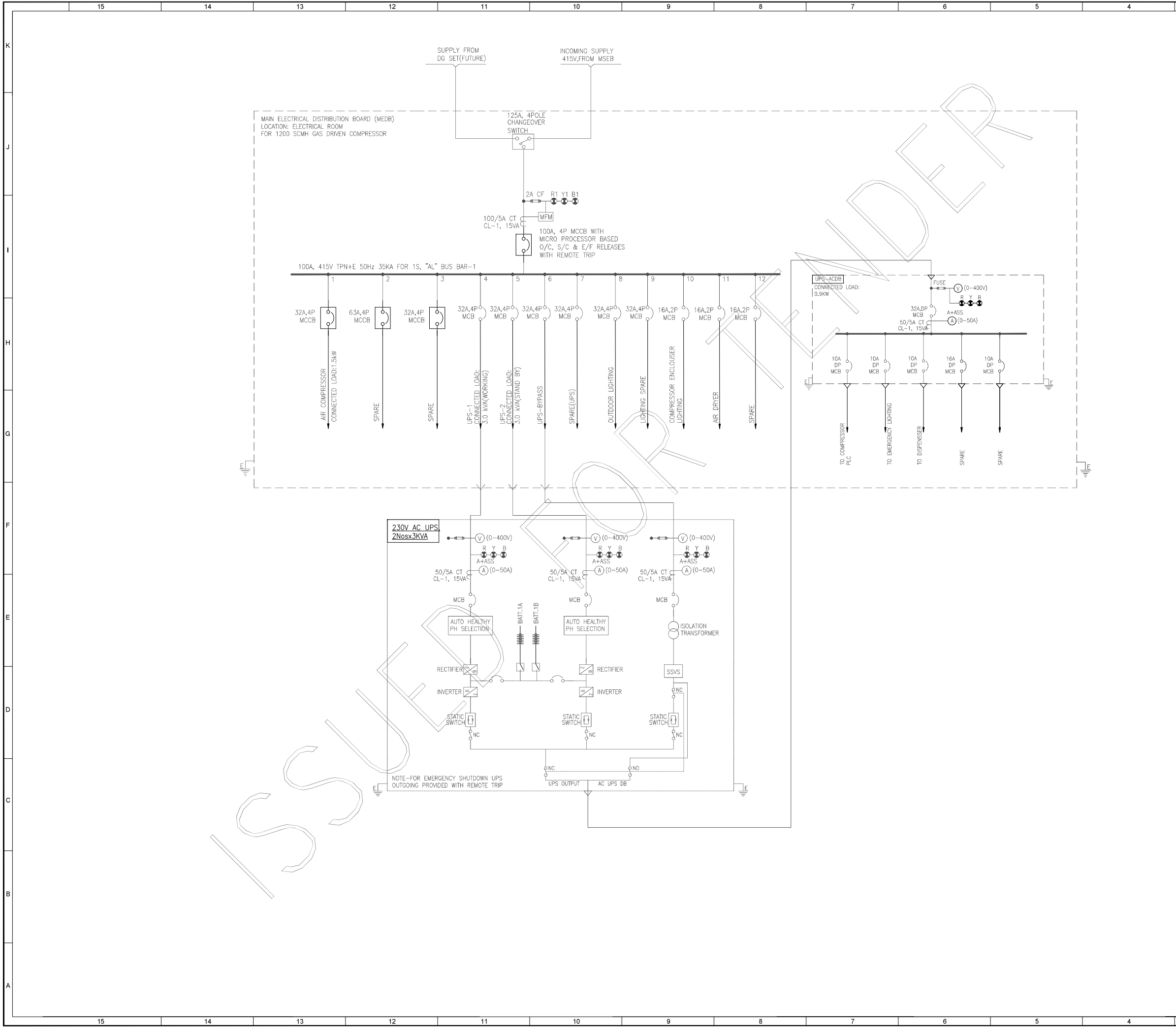


Corrigendum #1 dated: 08-01-2026				
TENDER FOR ANNUAL RATE CONTRACT FOR EXECUTION OF COMPOSITE WORKS (MECHANICAL & ELECTRICAL) FOR CNG STATIONS AT KOLHAPUR GA				
TENDER NO. HOGPL/2025-26/C&P/005 DATE: 10.06.2025				
Sl. No.	Tender Refernace Clause	Description of Cluase		Amendment/Addition/Modification/Deletion
COMMERCIAL VOLUME				
1	7.0 DETAILS OF BID DOCUMENTS Section - I Invitation for Bids (IFB)	7.2 Tender Document on Sale: 26.12.2025 to 09.01.2026 upto 1200 Hrs 7.6 Bid Submission date and time: 09.01.2026 up to 1430 Hrs IST 7.7 Un-Priced bid opening date and Time: 09.01.2026 at 1500 HRS. IST on E-tender portal	Amendment	7.2 Tender Document on Sale: 26.12.2025 to 15.01.2026 upto 1200 Hrs 7.6 Bid Submission date and time: 15.01.2026 up to 1430 Hrs IST 7.7 Un-Priced bid opening date and Time: 15.01.2026 at 1500 HRS. IST on E-tender portal
TECHNICAL VOLUME				
2	Drawing	SLD (Single Line Diagram)	Amendment	Refer attached SLD (Single Line Diagram)
Note: This Corrigendum shall form an integral part of the bidding document and shall be signed/stamped and submitted along with the bid. All other terms and conditions ahall remain un-changed.				

Signature & Seal of Bidder



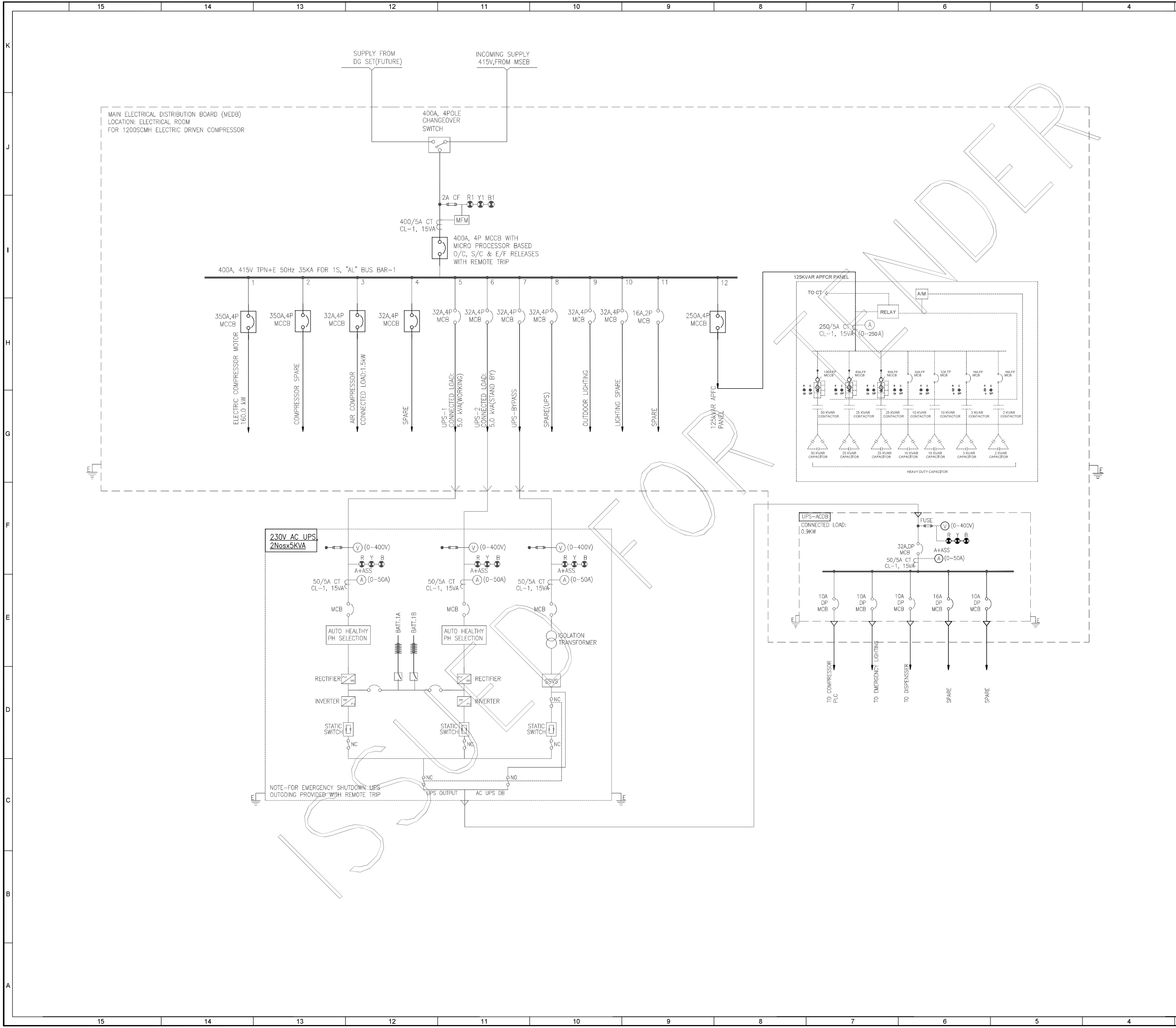
REFERENCE DRAWINGS	
DRAWING TITLE	DRAWING NUMBER
ELECTRICAL LOAD LIST	XXXX-XX-EL-4ST-4001
ELECTRICAL DESIGN BASIS	XXXX-XX-EL-DB-4001

- NOTES :-**
- ALL ELECTRICAL EQUIPMENT BE TROPICALISED IN COMPLIANCE WITH LOCAL SITE CONDITION.
 - THE METERS INSTALLED IN SOLAR POWER SET LOCAL PANEL SHALL BE DIGITAL MULTIFUNCTIONAL METERS.
 - R.V.L INDICATIONS ARE FEED TO SCADA SYSTEM FROM MEDB FOR PANEL.
 - THE CAPACITOR BANK FEEDER SHALL BE USED FOR FUTURE POWER FACTOR IMPROVEMENT AS PER GEB REQUIREMENT.
 - THE SIZE OF ALL INSTRUMENTS SHALL BE 95mm x 95mm FOR FULL & HALF SIZE MODULES AND 72mm x 72mm FOR LOWER SIZE MODULES.
 - ALL AMMETER & VOLTMETERS SHALL BE DIGITAL TYPE AND OF CLASS 1.5 ACCURACY.
 - POWER & CONTROL CABLES SHALL BE 1.1KV GRADE, STRAIDED COPPER / ALUMINIUM CONDUCTOR, PVC INNER SHEATH & PVC OUTER SHEATH WITH FRILS CHARACTERISTICS CABLES SHALL CONFORM TO IS7000.
 - OUTDOOR ELECTRICAL MATERIALS SHALL BE PROVIDED IN COMPLIANCE WITH THE RELEVANT HAZARDOUS AREA CLASSIFICATION.
 - THE CABLE SIZE ARE CALCULATED ACCORDING TO CABLE SIZING CALCULATION SHEET.
 - ALL INDOOR DBS SHALL BE PROVIDED WITH IP53 PROTECTION AND FOR OUTDOOR IP65.
 - MCCBS SHALL BE 4P, 35A AND MCCBS SHALL BE DP, 10A.
 - TWO(2) 200/10.5 OF BATTERY BANK WITH 4 HOURS BACKUP EACH SHALL BE PROVIDED FOR UPS.
 - UPS AND MAIN INCOMER MCCB WILL ALSO HAVE REMOTE START AND STOP FACILITY.

S.NO.	LEGENDS	DESCRIPTION
1.	CP/TR	CATHODIC PROTECTION TRANSFORMER RECTIFIER UNIT
2.		RECTIFIER
3.		SWITCH
4.		BATTERY
5.		INVERTER
6.		INDICATION LAMP
7.		PUSH BUTTON
8.		FREQUENCY METER
9.		POWER FACTOR METER
10.		VOLTMETER
11.		AMMETER
12.		ENERGY METER
13.		AMPERE SELECTOR SWITCH
14.		VOLTAGE SELECTOR SWITCH
15.		ELECTRICAL INTERLOCK
16.		SOLID STATE VOLTAGE STABILIZER
17.		MCCB
18.		MCB
19.		CONTACTOR
20.		CURRENT TRANSFORMER
21.		MULTIFUNCTION METER
22.		EARTH
23.		OVER LOAD
24.		SHORT CIRCUIT
25.		NO. OF CORE IN CABLE
26.		STATING POINT
27.		3 PHASE ENERGY METER

ISSUED FOR TENDER

REV.	DATE	DESCRIPTION	PREP.	CHKD.	APPD.
D1	28.09.21	ISSUED FOR TENDER	AK	NK	AA
CLIENT: HOGPL(HPOIL GAS PRIVATE LIMITED)					
PMC: M/s. VCS QUALITY SERVICES PVT. LTD. B-10, II nd FLOOR, BAJAJ BHAWAN, SECTOR-03, NOIDA - 201301					
PROJECT: CITY GAS DISTRIBUTION NETWORK KOHLAPUR					
TITLE: SINGLE LINE DIAGRAM FOR GAS DRIVEN ONLINE CNG STATION AT KOHLAPUR					
SCALE: NTS		TOTAL NO. OF SHTS:		SHT. NO. 1 OF 1	
SIZE	JOB NO.	DRAWING NUMBER			REV.
A1	XXXX	XXXX-XX-EL-SLD-4001			D1



REFERENCE DRAWINGS

DRAWING TITLE	DRAWING NUMBER
ELECTRICAL LOAD LIST	XXXX-XX-EL-4ST-4001
ELECTRICAL DESIGN BASIS	XXXX-XX-EL-4DB-4001

NOTES :-

- ALL ELECTRICAL EQUIPMENT BE TROPICALISED IN COMPLIANCE WITH LOCAL SITE CONDITION.
- THE METERS INSTALLED IN SOLAR POWER SET LOCAL PANEL SHALL BE DIGITAL MULTIFUNCTIONAL METERS.
- R.V.L INDICATORS ARE FEED TO SCADA SYSTEM FROM MEDB FOR PANEL
- THE CAPACITOR BANK FEEDER SHALL BE USED FOR FUTURE POWER FACTOR IMPROVEMENT AS PER GEB REQUIREMENT.
- THE SIZE OF ALL INSTRUMENTS SHALL BE 96mm x 96mm FOR FULL & HALF SIZE MODULES AND 72mm x 72mm FOR LOWER SIZE MODULES.
- ALL AMMETER & VOLTMETERS SHALL BE DIGITAL TYPE AND OF CLASS 1.5 ACCURACY.
- POWER & CONTROL CABLES SHALL BE 1.1KV GRADE, STRAIDED COPPER / ALUMINUM CONDUCTOR, PVC INNER SHEATH & PVC OUTER SHEATH WITH FRLS CHARACTERISTICS CABLES SHALL CONFORM TO IS7000.
- OUTDOOR ELECTRICAL MATERIALS SHALL BE PROVIDED IN COMPLIANCE WITH THE RELEVANT HAZARDOUS AREA CLASSIFICATION.
- THE CABLE SIZE ARE CALCULATED ACCORDING TO CABLE SIZING CALCULATION SHEET.
- ALL INDOOR DBS SHALL BE PROVIDED WITH IP53 PROTECTION AND FOR OUTDOOR IP54.
- MCCBS SHALL BE 4P, 35A AND MCCBS SHALL BE DP, 10A
- TWO(2)X20X10.8 OF BATTERY BANK WITH 4 HOURS BACKUP EACH SHALL BE PROVIDED FOR UPS
- UPS AND MAIN INCOMER MCCB WILL ALSO HAVE REMOTE START AND STOP FACILITY.

LEGENDS :-

S.NO.	LEGENDS	DESCRIPTION
1.	CP/TR	CATHODIC PROTECTION TRANSFORMER RECTIFIER UNIT
2.		RECTIFIER
3.		SWITCH
4.		BATTERY
5.		INVERTER
6.		INDICATION LAMP
7.		PUSH BUTTON
8.		FREQUENCY METER
9.		POWER FACTOR METER
10.		VOLTMETER
11.		AMMETER
12.		ENERGY METER
13.		AMPERE SELECTOR SWITCH
14.		VOLTAGE SELECTOR SWITCH
15.		ELECTRICAL INTERLOCK
16.		SOLID STATE VOLTAGE STABILIZER
17.		MCCB
18.		MCB
19.		CONTACTOR
20.		CURRENT TRANSFORMER
21.		MULTIFUNCTION METER
22.		EARTH
23.		OVER LOAD
24.		SHORT CIRCUIT
25.		NO. OF CORE IN CABLE
26.		SITTING POINT
27.		3 PHASE ENERGY METER

ISSUED FOR TENDER

D1	28.09.21	ISSUED FOR TENDER	AK	NK	AA
REV.	DATE	DESCRIPTION	PREP.	CHKD.	APPD.

CLIENT:HOGPL(HPOIL GAS PRIVATE LIMITED)

PMC:M/s. VCS QUALITY SERVICES PVT. LTD.
B-10, IInd FLOOR, BAJAJ BHAWAN,
SECTOR-03, NOIDA - 201301

PROJECT:
CITY GAS DISTRIBUTION NETWORK KOHLAPUR

TITLE:
SINGLE LINE DIAGRAM FOR ELECTRIC DRIVEN
ONLINE CNG STATION AT KOHLAPUR

SCALE:	NTS	TOTAL NO. OF SHTS:	SHT. NO. 1 OF 1
SIZE	JOB NO.	DRAWING NUMBER	REV.
A1	XXXX	XXXX-XX-EL-4ST-4001	D1