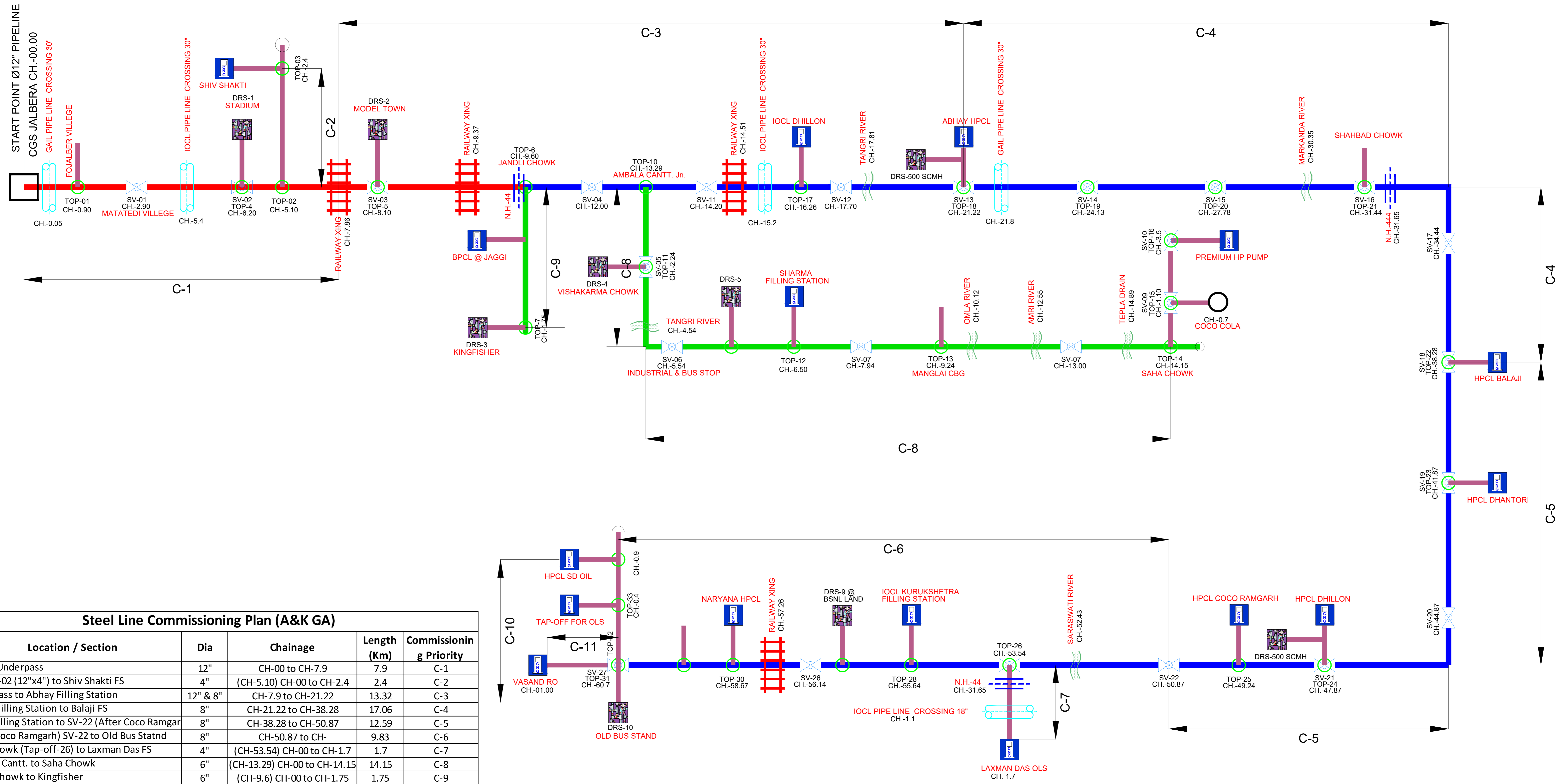


# PIPELINE SCHEMATIC DRAWING



Steel Line Commissioning Plan (A&K GA)

Sr. No	Location / Section	Dia	Chainage	Length (Km)	Commissioning Priority
1	CGS to Underpass	12"	CH-00 to CH-7.9	7.9	C-1
2	Tap-off-02 (12"x4") to Shiv Shakti FS	4"	(CH-5.10) CH-00 to CH-2.4	2.4	C-2
3	Underpass to Abhay Filling Station	12" & 8"	CH-7.9 to CH-21.22	13.32	C-3
4	Abhay Filling Station to Balaji FS	8"	CH-21.22 to CH-38.28	17.06	C-4
5	Balaji Filling Station to SV-22 (After Coco Ramgarh)	8"	CH-38.28 to CH-50.87	12.59	C-5
6	(After Coco Ramgarh) SV-22 to Old Bus Statnd	8"	CH-50.87 to CH-	9.83	C-6
7	Pipli Chowk (Tap-off-26) to Laxman Das FS	4"	(CH-53.54) CH-00 to CH-1.7	1.7	C-7
8	Ambala Cantt. to Saha Chowk	6"	(CH-13.29) CH-00 to CH-14.15	14.15	C-8
9	Jandli Chowk to Kingfisher	6"	(CH-9.6) CH-00 to CH-1.75	1.75	C-9
10	Old Bus Statnd to SD Oil Pump	4"	(CH-60.7) CH-00 to CH-0.9	0.9	C-10
11	SV-27 to Vasand Fill Fly	4"	(CH-60.7) CH-00 to CH-1.0	1	C-11

**LEGEND:**

- SV SECTIONALIZING VALVE STATION
- TOP TOP OFF POINT
- SECTIONALIZING VALVE
- TOP OFF POINT
- RIVER/NALA
- RAILWAY
- STATE/NATIONAL HIGHWAY
- FOREIGN PIPE LINE CROSSING
- 12" PIPELINE
- 8" PIPELINE
- 6" PIPELINE
- 4" PIPELINE
- RO STATION
- DRS

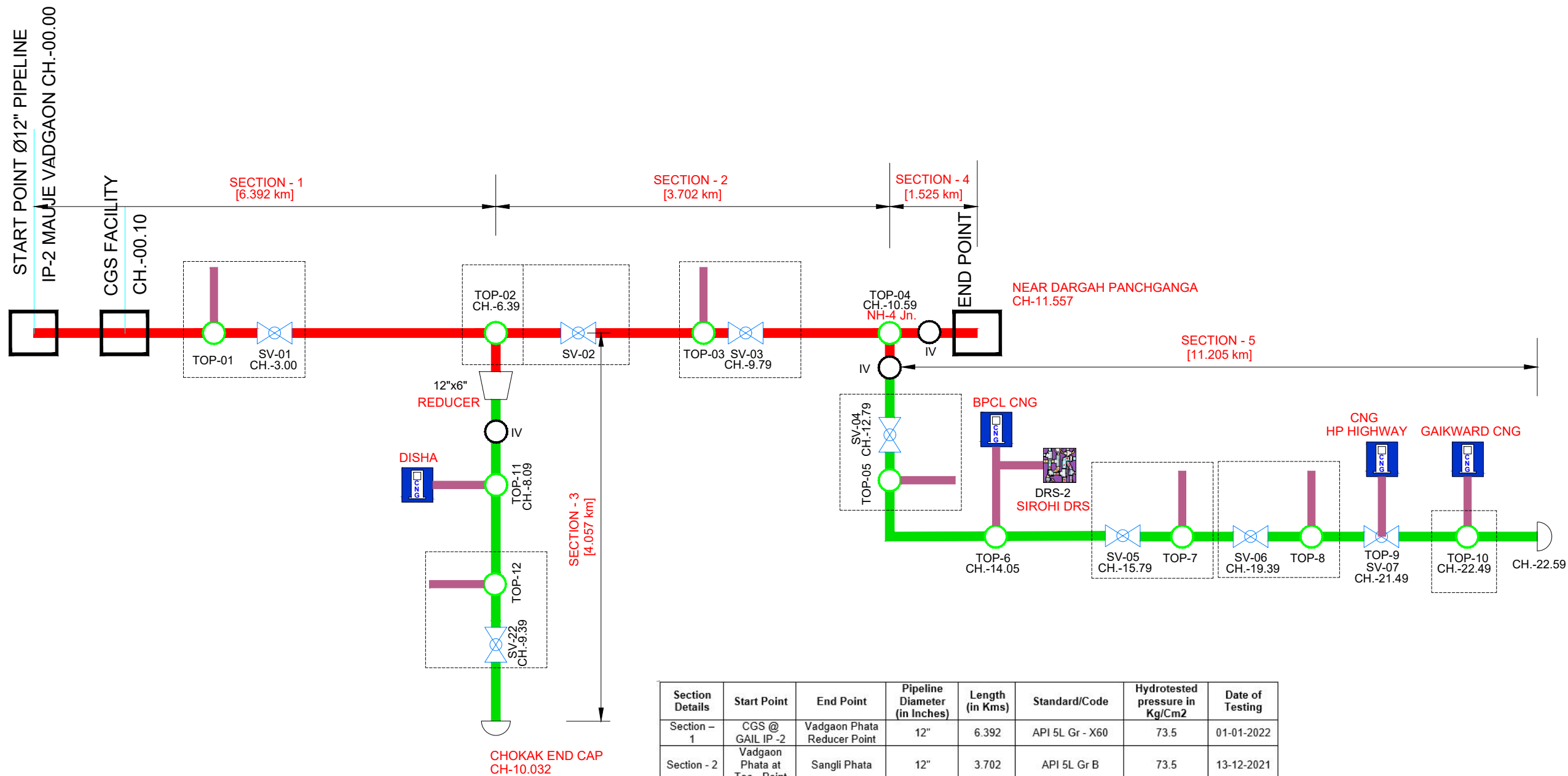
**NOTES:-**

- ALL CHAINAGES INDICATED ARE IN km.
- LOCATIONS OF IP & SV STATIONS ARE INDICATIVE ONLY AND EXACT LOCATIONS SHALL BE FINALIZED BASED ON PLOT AVAILABILITY.
- ALL DGAV SHALL BE REMOTE OPERATED.

0	02.06.22	ISSUED FOR CLIENT REVIEW	PUN	JR	HK
REV.	DATE	DESCRIPTION	PREP.	CHKD.	APPD.
CLIENT: <b>HINDUSTAN PETROLEUM CORPORATION LIMITED</b>					
PMC: <b>M/s. VCS QUALITY SERVICES PVT. LTD.</b> B-10, 11 <sup>th</sup> FLOOR, BAJAJ BHAWAN, SECTOR-03, NOIDA - 201301					
TITLE SCHEMATIC ARRANGEMENT OF PIPELINE FACILITIES AMBALA					
SCALE	NTS	DWG. NO.	1007-PL-SCMH-001	REV-2	

# PIPELINE SCHEMATIC DRAWING

PESO LICENCE NO  
A/M/HQ/PL/8 (P514022)



Section Details	Start Point	End Point	Pipeline Diameter (in Inches)	Length (in Kms)	Standard/Code	Hydrotested pressure in Kg/Cm <sup>2</sup>	Date of Testing
Section - 1	CGS @ GAIL IP -2	Vadgaon Phata Reducer Point	12"	6.392	API 5L Gr - X60	73.5	01-01-2022
Section - 2	Vadgaon Phata at Tee - Point	Sangli Phata	12"	3.702	API 5L Gr B	73.5	13-12-2021
Section - 3	Vadgaon Phata Reducer Point	Chokak Village End Cap	6"	4.057	API 5L Gr B	73.5	02-12-2021
Section - 4	12X6 Reducer Point at Sangli Phata	Dargah near Panchganga river	12"	1.525	API 5L Gr B	73.5	17-01-2022
Section - 5	12X6 Reducer Point at Sangli Phata	Gaikwad Petrolinks	6"	11.205	API 5L Gr B	73.5	10-01-2022

### NOTES:-

1. ALL CHAINAGES INDICATED ARE IN km.
2. LOCATIONS OF IP & SV STATIONS ARE INDICATIVE ONLY AND EXACT LOCATIONS SHALL BE FINALIZED BASED ON PLOT AVAILABILITY.
3. ALL DGAV SHALL BE REMOTE OPERATED.

### LEGEND:

- |     |                              |  |              |
|-----|------------------------------|--|--------------|
| SV  | SECTIONALIZING VALVE STATION |  | 12" PIPELINE |
| TOP | TOP OFF POINT                |  | 8" PIPELINE  |
|     | SECTIONALIZING VALVE         |  | 6" PIPELINE  |
|     | TOP OFF POINT                |  | 4" PIPELINE  |
|     | RIVER/NALA                   |  | RO STATION   |
|     | RAILWAY                      |  | DRS          |
|     | STATE/NATIONAL HIGHWAY       |  | IV           |
|     | REDUCER                      |  |              |

REV.	DATE	DESCRIPTION	PREP.	CHKD.	APPD.
2	05.05.22	ISSUED FOR CONSTRUCTION	PUN	ANUJ	PK
1	03.09.21	ISSUED FOR CLIENT REVIEW	ANUJ	JR	PK
0	11.06.21	ISSUED FOR CLIENT REVIEW	ANUJ	JR	PK

CLIENT: **HP OIL GAS PRIVATE LIMITED (HOGPL)**

PMC: **M/s. VCS QUALITY SERVICES PVT. LTD.**  
B-10, II<sup>nd</sup> FLOOR, BAJAJ BHAWAN, SECTOR-03, NOIDA - 201301

TITLE: **SCHEMATIC ARRANGEMENT OF PIPELINE FACILITIES KOLHAPUR**

SCALE	NTS	DWG. NO.	1007-PL-SCMH-002	REV-1
-------	-----	----------	------------------	-------