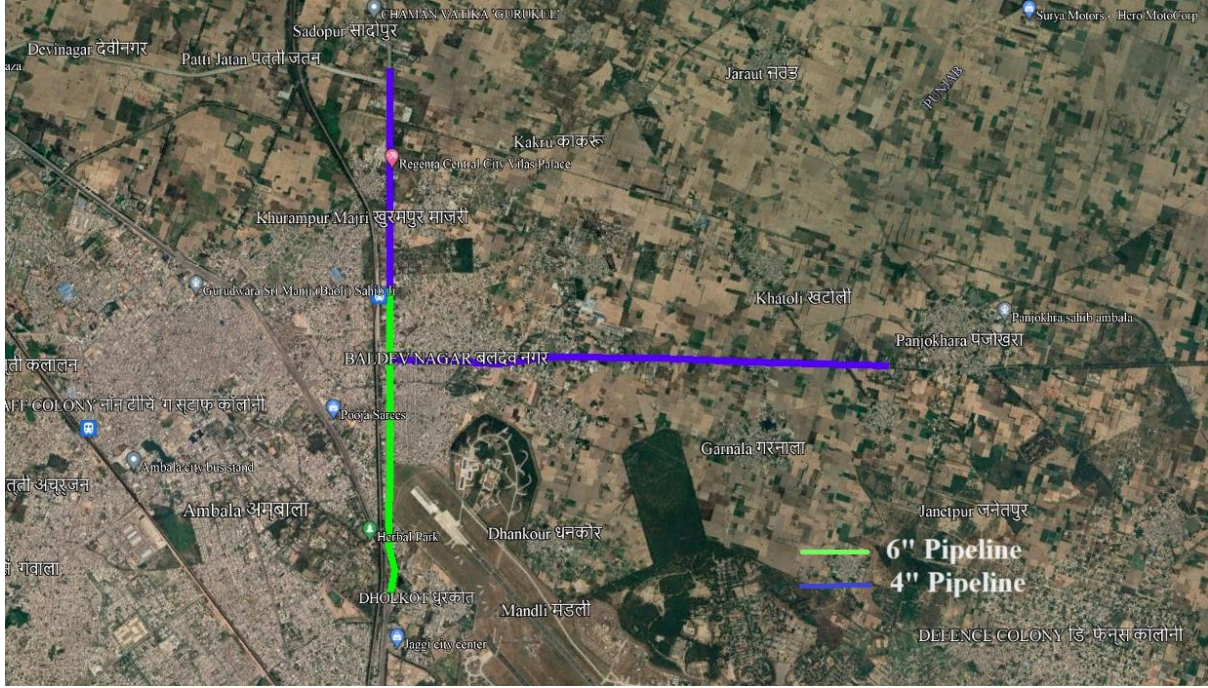


Annexure 1



STEEL PIPELINE NETWORK:

1. 6" x 2.7 KM Steel pipeline: Kingfisher Resort to Passport Office Ambala.
2. 4" X 6.8 KM Steel Pipeline: Baldev Nagar Chowk to CMHP Filling Station towards Pinjokhra & Passport Office to IOCL Pump, Kakroo.

MDPE PIPELINE NETWORK:

Laying of 7 Kms of 125/63mm MDPE pipeline along with steel pipeline in common trench from Kingfisher Resort towards Baldev Nagar.